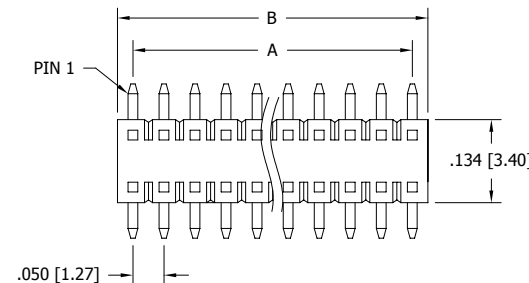


| POSITIONS | CONTACTS | A | | B | | C | |
|-----------|----------|-------|-------|-----------|---------|-------|-------|
| | | INCH | MM | INCH±.020 | MM±0.50 | INCH | MM |
| 1 | 2 | - | 0.00 | .050 | 1.27 | .050 | - |
| 2 | 4 | .050 | 1.27 | .100 | 2.54 | .100 | - |
| 3 | 6 | .100 | 2.54 | .150 | 3.81 | .150 | 1.27 |
| 4 | 8 | .150 | 3.81 | .200 | 5.08 | .200 | 2.54 |
| 5 | 10 | .200 | 5.08 | .250 | 6.35 | .250 | 3.18 |
| 6 | 12 | .250 | 6.35 | .300 | 7.62 | .300 | 3.81 |
| 7 | 14 | .300 | 7.62 | .350 | 8.89 | .350 | 4.45 |
| 8 | 16 | .350 | 8.89 | .400 | 10.16 | .400 | 5.08 |
| 9 | 18 | .400 | 10.16 | .450 | 11.43 | .450 | 5.72 |
| 10 | 20 | .450 | 11.43 | .500 | 12.70 | .500 | 6.35 |
| 11 | 22 | .500 | 12.70 | .550 | 13.97 | .550 | 6.99 |
| 12 | 24 | .550 | 13.97 | .600 | 15.24 | .600 | 7.62 |
| 13 | 26 | .600 | 15.24 | .650 | 16.51 | .650 | 8.26 |
| 14 | 28 | .650 | 16.51 | .700 | 17.78 | .700 | 8.89 |
| 15 | 30 | .700 | 17.78 | .750 | 19.05 | .750 | 9.53 |
| 16 | 32 | .750 | 19.05 | .800 | 20.32 | .800 | 10.16 |
| 17 | 34 | .800 | 20.32 | .850 | 21.59 | .850 | 10.80 |
| 18 | 36 | .850 | 21.59 | .900 | 22.86 | .900 | 11.43 |
| 19 | 38 | .900 | 22.86 | .950 | 24.13 | .950 | 12.07 |
| 20 | 40 | .950 | 24.13 | 1.000 | 25.40 | 1.000 | 12.70 |
| 21 | 42 | 1.000 | 25.40 | 1.050 | 26.67 | 1.050 | 13.34 |
| 22 | 44 | 1.050 | 26.67 | 1.100 | 27.94 | 1.100 | 13.97 |
| 23 | 46 | 1.100 | 27.94 | 1.150 | 29.21 | 1.150 | 14.61 |
| 24 | 48 | 1.150 | 29.21 | 1.200 | 30.48 | 1.200 | 15.24 |
| 25 | 50 | 1.200 | 30.48 | 1.250 | 31.75 | 1.250 | 15.88 |
| 26 | 52 | 1.250 | 31.75 | 1.300 | 33.02 | 1.300 | 16.51 |
| 27 | 54 | 1.300 | 33.02 | 1.350 | 34.29 | 1.350 | 17.15 |
| 28 | 56 | 1.350 | 34.29 | 1.400 | 35.56 | 1.400 | 17.78 |
| 29 | 58 | 1.400 | 35.56 | 1.450 | 36.83 | 1.450 | 18.42 |
| 30 | 60 | 1.450 | 36.83 | 1.500 | 38.10 | 1.500 | 19.05 |
| 31 | 62 | 1.500 | 38.10 | 1.550 | 39.37 | 1.550 | 19.69 |
| 32 | 64 | 1.550 | 39.37 | 1.600 | 40.64 | 1.600 | 20.32 |
| 33 | 66 | 1.600 | 40.64 | 1.650 | 41.91 | 1.650 | 20.96 |
| 34 | 68 | 1.650 | 41.91 | 1.700 | 43.18 | 1.700 | 21.59 |
| 35 | 70 | 1.700 | 43.18 | 1.750 | 44.45 | 1.750 | 22.23 |
| 36 | 72 | 1.750 | 44.45 | 1.800 | 45.72 | 1.800 | 22.86 |
| 37 | 74 | 1.800 | 45.72 | 1.850 | 46.99 | 1.850 | 23.50 |
| 38 | 76 | 1.850 | 46.99 | 1.900 | 48.26 | 1.900 | 24.13 |
| 39 | 78 | 1.900 | 48.26 | 1.950 | 49.53 | 1.950 | 24.77 |
| 40 | 80 | 1.950 | 49.53 | 2.000 | 50.80 | 2.000 | 25.40 |
| 41 | 82 | 2.000 | 50.80 | 2.050 | 52.07 | 2.050 | 26.04 |
| 42 | 84 | 2.050 | 52.07 | 2.100 | 53.34 | 2.100 | 26.67 |
| 43 | 86 | 2.100 | 53.34 | 2.150 | 54.61 | 2.150 | 27.31 |
| 44 | 88 | 2.150 | 54.61 | 2.200 | 55.88 | 2.200 | 27.94 |
| 45 | 90 | 2.200 | 55.88 | 2.250 | 57.15 | 2.250 | 28.58 |
| 46 | 92 | 2.250 | 57.15 | 2.300 | 58.42 | 2.300 | 29.21 |
| 47 | 94 | 2.300 | 58.42 | 2.350 | 59.69 | 2.350 | 29.85 |
| 48 | 96 | 2.350 | 59.69 | 2.400 | 60.96 | 2.400 | 30.48 |
| 49 | 98 | 2.400 | 60.96 | 2.450 | 62.23 | 2.450 | 31.12 |
| 50 | 100 | 2.450 | 62.23 | 2.500 | 63.50 | 2.500 | 31.75 |

*Indicated Temperature and time is for component Insulator. Higher processing temperatures may be used, provided heat is applied from back side of PCB, and Insulator does not exceed indicated temperature and time.

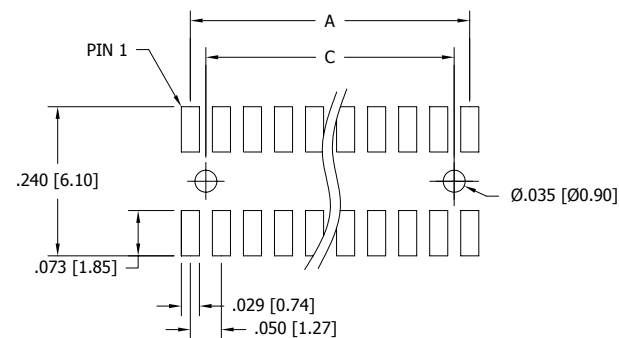
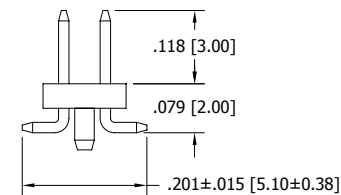
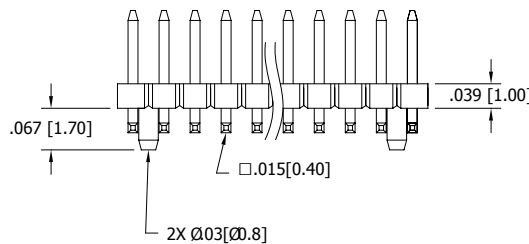
| REVISIONS | | | | |
|-----------|---------|--------------------------------------|----------|-----|
| REV. | ECO. NO | DESCRIPTION | DATE | BY |
| A | 1605 | INITIAL RELEASE | 08/13/07 | RAH |
| B | 1660 | ADD TOLERANCE TO TABLE, ADD PIN 1 ID | 04/15/08 | ASK |



PART NUMBER CODING

GRPB_ _2VWQP-RC

NUMBER OF POSITIONS
(01 - 50)



RECOMMENDED P.C. BOARD HOLE LAYOUT.

NOTES:

- INSULATOR MATERIAL: NYLON 9T.
*PROCESSING TEMPERATURE = 260° C FOR 10 SEC
- CONTACT MATERIAL: BRASS
- PLATING: GOLD FLASH OVERALL
- OPERATING TEMPERATURE: -40°C TO +105°C
- INSULATION RESISTANCE: 5000 MEGA OHM MIN.
- CONTACT RESISTANCE: 20 MILLI OHM MAX.
- UL FLAMMABILITY RATING: 94V-0
- VOLTAGE RATING: 500 VAC MINIMUM AT SEA LEVEL.
- CURRENT RATING: 1 AMP



RoHS COMPLIANT

| | | | | |
|---|----------|---|--------------------------|---|
| UNLESS OTHERWISE SPECIFIED: DIMENSIONS ARE IN INCHES[MM] TOLERANCES: | | DATE | NAME | SULLINS ELECTRONICS |
| X. = ± .020 [0.50] .X = ± .011 [1.30] .XX = ± .008 [2.0] .XXX = ± .006 [0.15] .XXXX = ± .0005 [0.127] | | 08/13/07 | RAH | |
| PARENTHEetical INFORMATION IS FOR REFERENCE ONLY INTERPRET GD&T PER: ANSI Y14.5-1984 | | THE INFORMATION HEREIN CONTAINS PROPRIETARY INFORMATION OF SULLINS ELECTRONICS AND IS NOT TO BE REPRODUCED, USED OR DISCLOSED TO OTHERS FOR ANY PURPOSE EXCEPT AS SPECIFICALLY AUTHORIZED IN WRITING BY AN OFFICER OF SULLINS ELECTRONICS. | | DESCRIPTION ".050" DUAL ROW MALE HEADER, SMT PART NUMBER GRPB_ _2VWQP-RC |
| SIZE | DWG. NO. | REV | SCALE: NONE SHEET 1 OF 1 | |
| C | 10960 | B | | |